

Virbac (Australia) Pty Limited	Page 1 of 11
Product Name:	CYDECTIN [®] LONG ACTING INJECTION FOR CATTLE
Version Date:	22 December 2010
Pack sizes:	50 mL, 200 mL, 500 mL - composite label
Reason:	Addition of 500 mL pack size (60116/51871) - clean

Text above this line or in italics between parallel lines is not included in the label copy.

CARTON - FRONT PANEL

CAUTION
KEEP OUT OF REACH OF CHILDREN
READ SAFETY DIRECTIONS BEFORE OPENING OR USING
FOR ANIMAL TREATMENT ONLY

CYDECTIN[®] Long Acting Injection for Cattle

ACTIVE CONSTITUENT: 100 mg/mL MOXIDECTIN

For the treatment and control of moxidectin sensitive internal and external parasites in cattle.

CONTENTS: 50 mL, 200 mL, 500 mL

VIRBAC LOGO

CARTON - SIDE PANEL 1

CYDECTIN[®] Long Acting Injection for Cattle

- Kills roundworms for longer
- Kills cattle tick*
- Long acting control of *Ostertagia* spp., *Haemonchus* spp., *Trichostrongylus axei*, *Cooperia* spp., lungworm (*Dictyocaulus viviparus*), nodule worm (*Oesophagostomum radiatum*), sucking lice (*Linognathus vituli*) and cattle tick (*Rhipicephalus (Boophilus) microplus*).
- No known impact on dung beetles*
- Controls roundworms, lice and mites*

* See leaflet for approved statement

CARTON - SIDE PANEL 2

PROTECTION PERIOD

When CYDECTIN LONG ACTING INJECTION FOR CATTLE is used at the recommended dose rate as a single subcutaneous injection, it prevents re-infection of cattle with parasites as in the following table:

Parasite species	Persistent protection period
<i>Ostertagia</i> spp.	112 days
<i>Haemonchus</i> spp.	120 days
<i>Trichostrongylus axei</i>	72 days
<i>Cooperia</i> spp.	21 days
<i>Dictyocaulus viviparus</i>	120 days
<i>Oesophagostomum radiatum</i>	120 days
<i>Linognathus vituli</i>	133 days

Verified

Virbac (Australia) Pty Limited		Page 2 of 11
Product Name:	CYDECTIN [®] LONG ACTING INJECTION FOR CATTLE	
Version Date:	22 December 2010	
Pack sizes:	50 mL, 200 mL, 500 mL - composite label	
Reason:	Addition of 500 mL pack size (60116/51871) - clean	

Text above this line or in italics between parallel lines is not included in the label copy.

CYDECTIN LONG ACTING INJECTION FOR CATTLE is effective for treatment and control of cattle tick, including strains resistant to organophosphates, synthetic pyrethroids and amidines. The persistent activity of CYDECTIN LONG ACTING INJECTION FOR CATTLE prevents the development of viable cattle tick (*Rhipicephalus (Boophilus) microplus*) for at least 51 days and prevents egg production for at least 65 days after treatment. Some engorged females containing viable eggs may continue to drop for up to 4 days after treatment. This should be taken into account when planning a strategic treatment program.

Resistance may develop to any chemical.

APVMA Approval No. 60116/51871

VIRBAC LOGO

VIRBAC (AUSTRALIA) PTY. LIMITED
361 Horsley Road, Milperra NSW 2214
Freecall Customer Service Line: 1800 009 847
www.virbac.com.au

® Registered Trademark of Virbac (Australia) Pty Limited.

CARTON - TOP FLAP

CYDECTIN[®] Long Acting Injection for Cattle

CONTENTS: 50 mL, 200 mL, 500 mL

CARTON - BACK PANEL

DIRECTIONS FOR USE:

Restraints:

DO NOT USE in cattle that may be exported live.

MILK: DO NOT USE in lactating cows or within 80 days of calving where milk or milk products may be used for human consumption.

INJECT ONLY by subcutaneous injection into the back of the ear (as directed on the leaflet). Do not inject anywhere else in the animal. Injection sites anywhere else on the animal may result in injection site residues that exceed approved limits at the Withholding Period or Export Slaughter Interval.

Dosage and Administration:

Discard unused portion after 6 months of first broaching container.

Dose Rate:

1 mg moxidectin/kg liveweight (1 mL/100 kg liveweight).

Retreatment Interval: Do not retreat with CYDECTIN LONG ACTING INJECTION FOR CATTLE for at least 56 days after administration.

CYDECTIN LONG ACTING INJECTION FOR CATTLE must be administered by subcutaneous (under the skin) injection into the **back of the ear towards its base**. **DO NOT administer anywhere else on the animal**. Avoid intravascular (into a blood vessel) injection. Some injection site reactions or generalised reactions are possible. Treat as appropriate. Good head restraint is required for effective injection. See enclosed leaflet for further instructions.

Virbac (Australia) Pty Limited		Page 3 of 11
Product Name:	CYDECTIN [®] LONG ACTING INJECTION FOR CATTLE	
Version Date:	22 December 2010	
Pack sizes:	50 mL, 200 mL, 500 mL - composite label	
Reason:	Addition of 500 mL pack size (60116/51871) - clean	

Text above this line or in italics between parallel lines is not included in the label copy.

The product is ready to use. Administer the dose according to the dosage table **using the special Cydectin 5 mL injector gun. Do not use any other injector.** Check dose rates and equipment before treatment commences. Cattle should be **weighed** prior to dosing and treated according to the weight range bracket in the dosage table below. Do not underdose.

Dose Rate Table:

[50 mL]

Weight range (kg)	Dose volume (mL)	Doses per pack 50 mL
*100	1	50
101-150	1.5	33
151-200	2	25
201-250	2.5	20
251-300	3	16
301-350	3.5	14
351-400	4	12
401-450	4.5	11
451-500 [†]	5	10

[200 mL]

Weight range (kg)	Dose volume (mL)	Doses per pack 200 mL
*100	1	200
101-150	1.5	133
151-200	2	100
201-250	2.5	80
251-300	3	66
301-350	3.5	57
351-400	4	50
401-450	4.5	44
451-500 [†]	5	40

[500 mL]

Weight range (kg)	Dose volume (mL)	Doses per pack 500 mL
*100	1	500
101-150	1.5	333
151-200	2	250
201-250	2.5	200
251-300	3	166
301-350	3.5	142
351-400	4	125
401-450	4.5	111
451-500 [†]	5	100

* DO NOT USE IN CATTLE LESS THAN 100 KG

† DO NOT USE IN CATTLE GREATER THAN 500 KG

WITHHOLDING PERIODS:

MEAT: DO NOT USE less than 56 days before slaughter for human consumption.

MILK: DO NOT USE on lactating cows or within 80 days of calving where milk or milk products may be used for human consumption.

Virbac (Australia) Pty Limited	Page 4 of 11
Product Name:	CYDECTIN [®] LONG ACTING INJECTION FOR CATTLE
Version Date:	22 December 2010
Pack sizes:	50 mL, 200 mL, 500 mL - composite label
Reason:	Addition of 500 mL pack size (60116/51871) - clean

Text above this line or in italics between parallel lines is not included in the label copy.

TRADE ADVICE:

EXPORT SLAUGHTER INTERVAL: 108 days. DO NOT USE in cattle that may be exported live.

EFFECT ON DUNG BEETLES

When applied as directed, the levels of CYDECTIN LONG ACTING INJECTION FOR CATTLE in the faeces of treated cattle are not likely to have any significant adverse effect on the following dung beetles: *Onthophagus gazella*, *O. taurus*, *Euoniticellus intermedius* and *E. fulvus*. Effects on other dung beetle species have not been fully evaluated.

SAFETY DIRECTIONS:

Poisonous if swallowed. May irritate the nose and throat. Will irritate eyes and skin. Avoid contact with eyes and skin. Do not inhale. Wash hands after use.

FIRST AID:

If poisoning occurs, contact a doctor or Poisons Information Centre. *Phone Australia 13 11 26*. Additional information is listed in the Material Safety Data Sheet (MSDS) available from a retailer or the manufacturer.

PROTECTION OF WILDLIFE, FISH, CRUSTACEANS AND THE ENVIRONMENT

Moxidectin is extremely toxic to aquatic species. Do not contaminate dams, rivers, streams or other waterways with the chemical or used container.

DISPOSAL

Bury destroyed empty containers at a depth of 500 mm or more at a licensed/approved disposal site. In some States, waste can only be buried at a licensed landfill. Do not burn empty containers of product. Please recycle instruction leaflet and carton only.

STORAGE

Store below 30°C (Room temperature). Protect from light.

Batch Number:

Expiry Date:

Virbac (Australia) Pty Limited	Page 5 of 11
Product Name:	CYDECTIN [®] LONG ACTING INJECTION FOR CATTLE
Version Date:	22 December 2010
Pack sizes:	50 mL, 200 mL, 500 mL - composite label
Reason:	Addition of 500 mL pack size (60116/51871) - clean

Text above this line or in italics between parallel lines is not included in the label copy.

LEAFLET

CAUTION
KEEP OUT OF REACH OF CHILDREN
READ SAFETY DIRECTIONS BEFORE OPENING OR USING
FOR ANIMAL TREATMENT ONLY

CYDECTIN[®] Long Acting Injection for Cattle

ACTIVE CONSTITUENT: 100 mg/mL MOXIDECTIN

For the treatment and control of moxidectin sensitive internal and external parasites in cattle.

INDICATIONS

CYDECTIN LONG ACTING INJECTION FOR CATTLE contains moxidectin, a second generation member of the macrocyclic lactone family of chemicals. It is effective against sensitive strains of the following parasites:

Internal parasites

Mature (adult) and immature (L4)

Haemonchus placei (Barber's pole worm)

Haemonchus contortus

Ostertagia ostertagi / *Ostertagia lyrata* (including inhibited larvae)

Trichostrongylus spp. (Black scour worms)

Trichostrongylus axei

Cooperia oncophora (Small intestinal worm)

Cooperia pectinata

Cooperia punctata

Oesophagostomum radiatum (Nodule worm)

Bunostomum phlebotomum (Hookworm)

Trichuris discolor (Whipworm)

Trichuris ovis

Dictyocaulus viviparus (Lungworm)

Adult nematodes

Nematodirus spathiger

Nematodirus helvetianus

External parasites

Lice (Sucking lice)

Linognathus vituli

Haematopinus eurysternus

Solenopotes capillatus

Aids in the control of *Bovicola bovis* (biting lice)

Mites

Chorioptes bovis

Ticks

Rhipicephalus (Boophilus) microplus

Virbac (Australia) Pty Limited		Page 6 of 11
Product Name:	CYDECTIN [®] LONG ACTING INJECTION FOR CATTLE	
Version Date:	22 December 2010	
Pack sizes:	50 mL, 200 mL, 500 mL - composite label	
Reason:	Addition of 500 mL pack size (60116/51871) - clean	

Text above this line or in italics between parallel lines is not included in the label copy.

PROTECTION PERIOD

When CYDECTIN LONG ACTING INJECTION FOR CATTLE is used at the recommended dose rate as a single subcutaneous injection, it prevents re-infection of cattle with parasites as in the following table:

Parasite species	Persistent protection period
<i>Ostertagia</i> spp.	112 days
<i>Haemonchus</i> spp.	120 days
<i>Trichostrongylus axei</i>	72 days
<i>Cooperia</i> spp.	21 days
<i>Dictyocaulus viviparus</i>	120 days
<i>Oesophagostomum radiatum</i>	120 days
<i>Linognathus vituli</i>	133 days

CYDECTIN LONG ACTING INJECTION FOR CATTLE is effective for treatment and control of cattle tick, including strains resistant to organophosphates, synthetic pyrethroids and amidines. The persistent activity of CYDECTIN LONG ACTING INJECTION FOR CATTLE prevents the development of viable cattle tick (*Rhipicephalus (Boophilus) microplus*) for at least 51 days and prevents egg production for at least 65 days after treatment. Some engorged females containing viable eggs may continue to drop for up to 4 days after treatment. This should be taken into account when planning a strategic treatment program.

Resistance may develop to any chemical.

DIRECTIONS FOR USE:

Restraints:

DO NOT USE in cattle that may be exported live.

MILK: DO NOT USE in lactating cows or within 80 days of calving where milk or milk products may be used for human consumption.

INJECT ONLY by subcutaneous injection into the back of the ear (as directed below). Do not inject anywhere else in the animal. Injection sites anywhere else on the animal may result in injection site residues that exceed approved limits at the Withholding Period or Export Slaughter Interval.

Dosage and Administration:

Discard unused portion after 6 months of first broaching container.

Dose Rate:

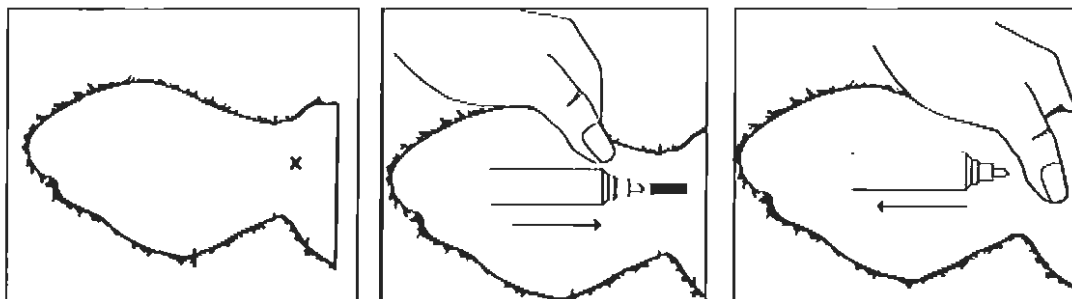
1 mg moxidectin/kg liveweight (1 mL/100 kg liveweight).

Retreatment Interval: Do not retreat with CYDECTIN LONG ACTING INJECTION FOR CATTLE for at least 56 days after administration.

CYDECTIN LONG ACTING INJECTION FOR CATTLE must be administered by subcutaneous (under the skin) injection into the **back of the ear towards its base**. **DO NOT administer anywhere else on the animal**. Avoid intravascular (into a blood vessel) injection. Some injection site reactions or generalised reactions are possible. Treat as appropriate. The animal must be confined in a restraint mechanism (head bail). Using the Cydectin 5 mL injector gun fitted with a 16 or 18 gauge, 12 to 18 mm needle, inject into the back of the ear towards its base. To accomplish this the needle should be inserted at the point indicated by the 'X' in the illustration, all the way up to the hub. Inject slowly and after injection withdraw the needle and place finger pressure on the site for a few seconds.

Virbac (Australia) Pty Limited		Page 7 of 11
Product Name:	CYDECTIN [®] LONG ACTING INJECTION FOR CATTLE	
Version Date:	22 December 2010	
Pack sizes:	50 mL, 200 mL, 500 mL - composite label	
Reason:	Addition of 500 mL pack size (60116/51871) - clean	

Text above this line or in italics between parallel lines is not included in the label copy.



Any potential site reactions may be minimised by attention to injection hygiene. If any generalised reactions such as ataxia (staggering), lying down or excess salivation occur, seek veterinary advice.

The product is ready to use. Administer the dose according to the dosage table using the special Cydectin 5 mL injector gun. Do not use any other injector. Check dose rates and equipment before treatment commences. Cattle should be weighed prior to dosing and treated according to the weight range bracket in the dosage table below. Do not underdose.

Dose Rate Table:
(50 mL)

Weight range (kg)	Dose volume (mL)	Doses per pack 50 mL
*100	1	50
101-150	1.5	33
151-200	2	25
201-250	2.5	20
251-300	3	16
301-350	3.5	14
351-400	4	12
401-450	4.5	11
451-500 [†]	5	10

(200 mL, 500 mL)

Weight range (kg)	Dose volume (mL)	Doses per pack 200 mL	Doses per pack 500 mL
*100	1	200	500
101-150	1.5	133	333
151-200	2	100	250
201-250	2.5	80	200
251-300	3	66	166
301-350	3.5	57	142
351-400	4	50	125
401-450	4.5	44	111
451-500 [†]	5	40	100

* DO NOT USE IN CATTLE LESS THAN 100 KG

[†] DO NOT USE IN CATTLE GREATER THAN 500 KG

A representative sample of animals should be weighed before treatment either with scales or a weighband.

Virbac (Australia) Pty Limited		Page 8 of 11
Product Name:	CYDECTIN [®] LONG ACTING INJECTION FOR CATTLE	
Version Date:	22 December 2010	
Pack sizes:	50 mL, 200 mL, 500 mL - composite label	
Reason:	Addition of 500 mL pack size (60116/51871) - clean	

Text above this line or in italics between parallel lines is not included in the label copy.

Dose rate to be based on heaviest cattle in each group (bulls, cows, steers, calves, etc). Do not underdose.

Where there is a large variation in size within a group, draft into two or more lines based on bodyweight, to avoid excessive overdosing.

CYDECTIN LONG ACTING INJECTION FOR CATTLE has a wide margin of safety when used as recommended.

CYDECTIN LONG ACTING INJECTION FOR CATTLE is safe to use concurrently with other treatments including mineral supplements and vaccines.

CAUTION: AVOID CARCASS DAMAGE

- Rinse all injection syringes and ensure needles and draw off tubes are free of dirt and unused product **before and after** use.
- Sanitise plastic injection apparatus by immersing in 500 mL of water plus 20 mL of household bleach (4% w/v available chlorine) for 1 hour. Flush with cool boiled water before use.
- Maintain cleanliness at all times.
- Keep needles sharp and clean. Replace frequently.
- Avoid injection of animals during wet weather or under dusty conditions as far as possible.
- This product should only be injected under the skin into the back surface of the ear. It should be injected in the third of the ear closest to the head. Do not inject at any other site.

NOT TO BE USED FOR ANY PURPOSE, OR IN ANY MANNER, CONTRARY TO THIS LABEL UNLESS AUTHORISED UNDER APPROPRIATE LEGISLATION.

WITHHOLDING PERIODS:

MEAT: DO NOT USE less than 56 days before slaughter for human consumption.

MILK: DO NOT USE in lactating cows or within 80 days of calving where milk or milk products may be used for human consumption.

TRADE ADVICE:

EXPORT SLAUGHTER INTERVAL (ESI): DO NOT USE less than 108 days before slaughter for export. The ESI on this label was correct at the time of label approval. Before using this product confirm the current ESI from either Virbac on 1800 009 847 or the APVMA website www.apvma.gov.au/residues/ESI.shtml. DO NOT USE in cattle that may be exported live.

EFFECT ON DUNG BEETLES

When applied as directed, the levels of CYDECTIN LONG ACTING INJECTION FOR CATTLE in the faeces of treated cattle are not likely to have any significant adverse effect on the following dung beetles: *Onthophagus gazella*, *O. taurus*, *Euoniticellus intermedius* and *E. fulvus*. Effects on other dung beetle species have not been fully evaluated.

SAFETY DIRECTIONS:

Poisonous if swallowed. May irritate the nose and throat. Will irritate eyes and skin. Avoid contact with eyes and skin. Do not inhale. Wash hands after use.

FIRST AID:

If poisoning occurs, contact a doctor or Poisons Information Centre. *Phone Australia 13 11 26.*

Virbac (Australia) Pty Limited		Page 9 of 11
Product Name:	CYDECTIN [®] LONG ACTING INJECTION FOR CATTLE	
Version Date:	22 December 2010	
Pack sizes:	50 mL, 200 mL, 500 mL - composite label	
Reason:	Addition of 500 mL pack size (60116/51871) - clean	

Text above this line or in italics between parallel lines is not included in the label copy.

WARNING: AVOID SELF-INJECTION

Accidental self-injection may cause an inflammatory or allergic response and medical advice should be sought in these cases. Deep injections, particularly if they are near a joint or associated with local bruising may require medical management. In most circumstances application of gentle pressure with absorbent material, e.g. facial tissues, to the needle puncture area to swab up unabsorbed product followed by cleaning of the damaged area with a suitable disinfectant will be sufficient to prevent problems.

Additional information is listed in the Material Safety Data Sheet (MSDS) available from a retailer or the manufacturer.

PROTECTION OF WILDLIFE, FISH, CRUSTACEANS AND THE ENVIRONMENT

Moxidectin is extremely toxic to aquatic species. Do not contaminate dams, rivers, streams or other waterways with the chemical or used container.

DISPOSAL

Bury destroyed empty containers at a depth of 500 mm or more at a licensed/approved disposal site. In some States, waste can only be buried at a licensed landfill. Do not burn empty containers of product. Please recycle instruction leaflet and carton only.

Discarded needles should immediately be placed in a designated and appropriately labelled "sharps" container. The container should be of a type to reduce the possibility of injury to handlers during collection and disposal. Incineration is the preferred method of disposal, otherwise sharps should be buried at a suitable site, such as an on-farm chemical disposal pit located away from water courses.

STORAGE

Store below 30°C (Room temperature). Protect from light.

APVMA Approval No. 60116/51871

VIRBAC LOGO

VIRBAC (AUSTRALIA) PTY. LIMITED

361 Horsley Road, Milperra NSW 2214
Freecall Customer Service Line: 1800 009 847
www.virbac.com.au

® Registered trademark of Virbac (Australia) Pty Limited.

Virbac (Australia) Pty Limited		Page 10 of 11
Product Name:	CYDECTIN [®] LONG ACTING INJECTION FOR CATTLE	
Version Date:	22 December 2010	
Pack sizes:	50 mL, 200 mL, 500 mL - composite label	
Reason:	Addition of 500 mL pack size (60116/51871) - clean	

Text above this line or in italics between parallel lines is not included in the label copy.

LABEL - PANEL 1

CAUTION
KEEP OUT OF REACH OF CHILDREN
READ SAFETY DIRECTIONS BEFORE OPENING OR USING
FOR ANIMAL TREATMENT ONLY

CYDECTIN[®] Long Acting Injection for Cattle

ACTIVE CONSTITUENT: 100 g/L MOXIDECTIN

For the treatment and control of moxidectin sensitive internal and external parasites of cattle.

CONTENTS: 50 mL, 200 mL, 500 mL

VIRBAC LOGO

[®] Registered trademark of Virbac (Australia) Pty Limited.

200 mL & 500 mL LABEL - PANEL 2

READ THE ENCLOSED LEAFLET BEFORE USING THIS PRODUCT.

DIRECTIONS FOR USE:

Restraints:

DO NOT USE in cattle that may be exported live.

MILK: DO NOT USE in lactating cows or within 80 days of calving where milk or milk products may be used for human consumption.

INJECT ONLY by subcutaneous injection into the back of the ear (as directed on the leaflet). Do not inject anywhere else in the animal. Injection sites anywhere else on the animal may result in injection site residues that exceed approved limits at the Withholding Period or Export Slaughter Interval.

Dosage and Administration:

Discard unused portion after 6 months of first broaching container.

Dose Rate: 1 mg moxidectin/kg liveweight (1 mL/100 kg liveweight).

Retreatment Interval: Do not retreat with CYDECTIN LONG ACTING INJECTION FOR CATTLE for at least 56 days after administration.

CYDECTIN LONG ACTING INJECTION FOR CATTLE must be administered by subcutaneous (under the skin) injection into the back of the ear towards its base. **DO NOT administer** anywhere else on the animal. Avoid intravascular injection. See enclosed leaflet for further instructions.

WITHHOLDING PERIODS:

MEAT: 56 days.

MILK: DO NOT USE in lactating cows or within 80 days of calving where milk or milk products may be used for human consumption.

TRADE ADVICE: EXPORT SLAUGHTER INTERVAL: 108 days.

DO NOT USE in cattle that may be exported live.

SAFETY DIRECTIONS: Poisonous if swallowed. May irritate the nose and throat. Will irritate eyes and skin. Avoid contact with eyes and skin. Do not inhale. Wash hands after use.

FIRST AID: If poisoning occurs, contact a doctor or Poisons Information Centre. *Phone Australia 13 11 26.*

STORAGE: Store below 30°C (Room temperature). Protect from light.

Virbac (Australia) Pty Limited		Page 11 of 11
Product Name:	CYDECTIN [®] LONG ACTING INJECTION FOR CATTLE	
Version Date:	22 December 2010	
Pack sizes:	50 mL, 200 mL, 500 mL - composite label	
Reason:	Addition of 500 mL pack size (60116/51871) - clean	

Text above this line or in italics between parallel lines is not included in the label copy.

VIRBAC (AUSTRALIA) PTY. LIMITED
361 Horsley Road, Milperra NSW 2214
Freecall Customer Service Line: 1800 009 847
www.virbac.com.au

Australian Patent no. 781682; 609399

[B]
Exp

50 mL LABEL - PANEL 2

READ THE ENCLOSED LEAFLET BEFORE USING THIS PRODUCT.

DIRECTIONS FOR USE:

Restraints:

DO NOT USE in cattle that may be exported live.

MILK: DO NOT USE in lactating cows or within 80 days of calving where milk or milk products may be used for human consumption.

INJECT ONLY by subcutaneous injection into the back of the ear (as directed on the leaflet). Do not inject anywhere else in the animal. Injection sites anywhere else on the animal may result in injection site residues that exceed approved limits at the Withholding Period or Export Slaughter Interval.

Dosage and Administration:

Discard unused portion after 6 months of first broaching container.

See leaflet for dose rate and instructions.

WITHHOLDING PERIODS:

MEAT: 56 days.

MILK: DO NOT USE in lactating cows or within 80 days of calving where milk or milk products may be used for human consumption.

TRADE ADVICE: EXPORT SLAUGHTER INTERVAL (ESI): 108 days. DO NOT USE in cattle that may be exported live.

SAFETY DIRECTIONS: Poisonous if swallowed. May irritate the nose and throat. Will irritate eyes and skin. Avoid contact with eyes and skin. Do not inhale. Wash hands after use.

FIRST AID: If poisoning occurs, contact a doctor or Poisons Information Centre. *Phone Australia 13 11 26.*

STORAGE: Store below 30°C (Room temperature). Protect from light.

APVMA Approval No. 60116/51871

VIRBAC (AUSTRALIA) PTY. LIMITED
361 Horsley Road, Milperra NSW 2214
Freecall Customer Service Line: 1800 009 847
www.virbac.com.au

Australian Patent no. 781682; 609399

[B]
Exp